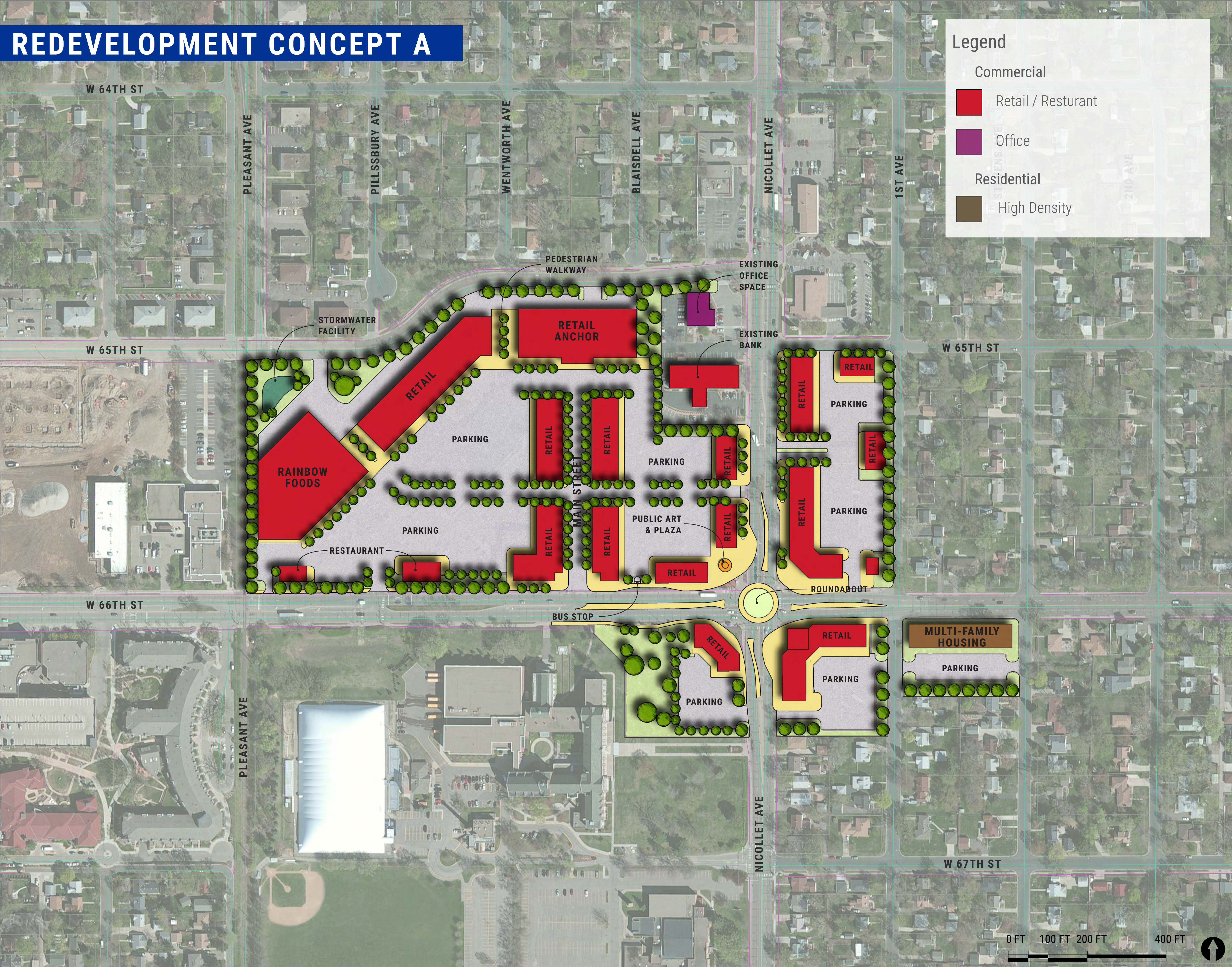


REDEVELOPMENT CONCEPT A

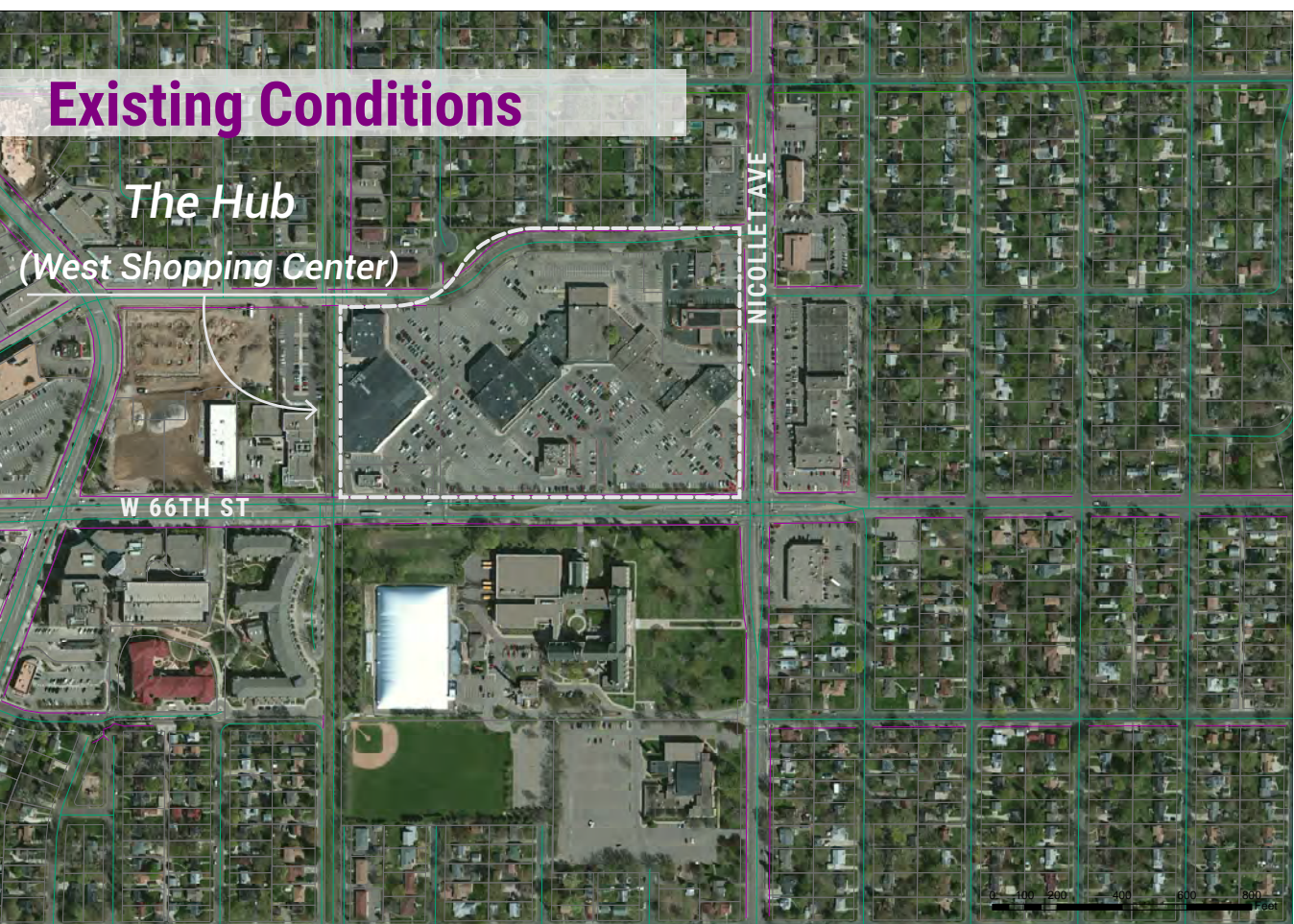


Legend

- Commercial
- Retail / Restaurant
- Office
- Residential
- High Density

Key Plan Elements

- Lifestyle retail/shopping center
- Pedestrian-friendly “Main Street”
- Placemaking features/public art
- Outdoor plaza spaces
- Pedestrian walkways
- One to two story buildings
- Street-oriented architecture

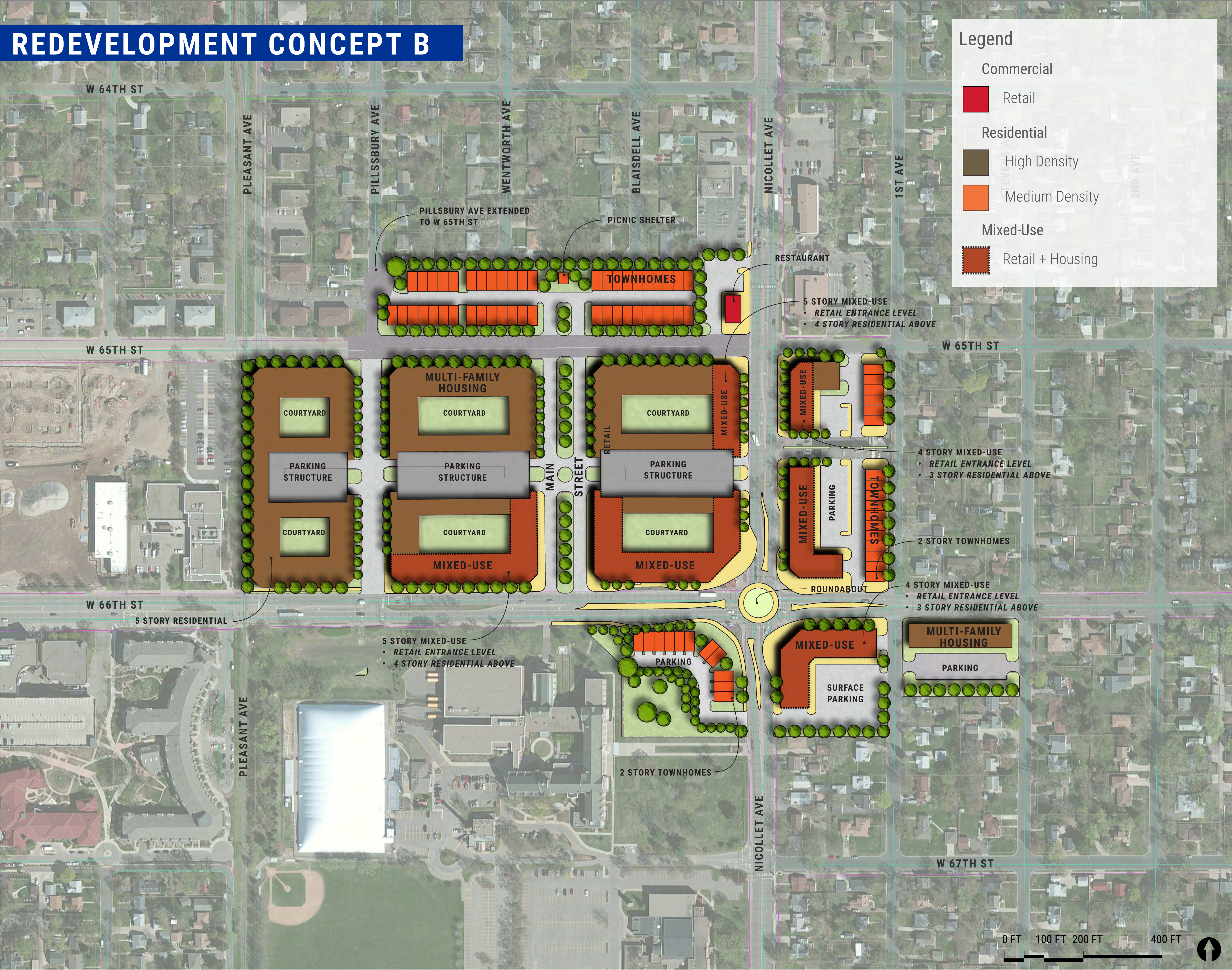


WHAT DO YOU THINK? (PLEASE SHARE YOUR THOUGHTS HERE!)

Precedent Images

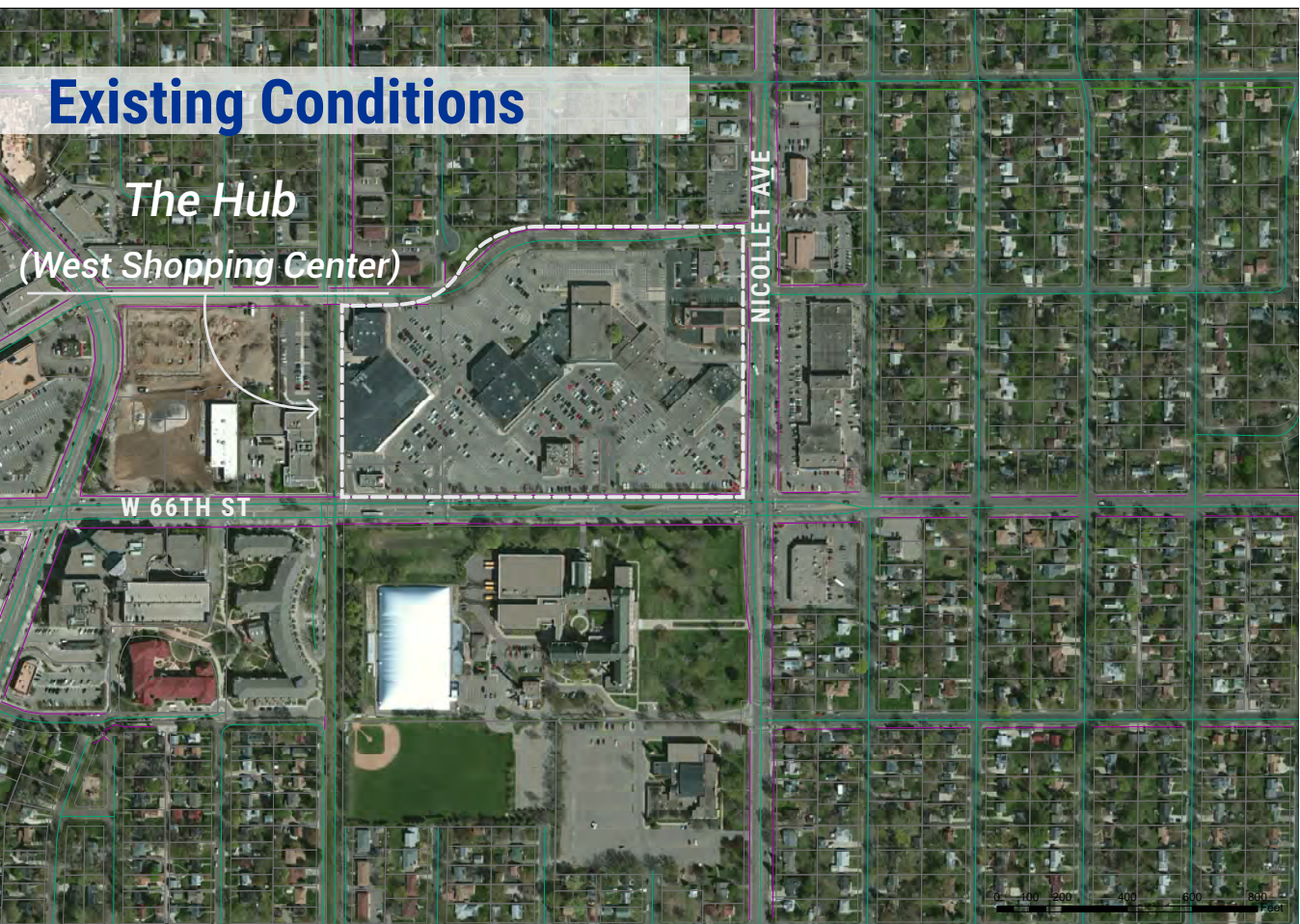


REDEVELOPMENT CONCEPT B



Key Plan Elements

- Compact, mixed-use development
- Street-oriented architecture
- Pedestrian-friendly streetscapes
- The straightening of W 65th Street
- Multi-story buildings - residential above ground level shops/restaurants
- "Main Street" connection - pedestrian focused streetscape with enhanced planting



WHAT DO YOU THINK? (PLEASE SHARE YOUR THOUGHTS HERE!)

Precedent Images

